



LIVE IN NATURE AT THE MOUNTAIN'S DOOR

WELCOME TO WILDEWOOD

A NEW AND EXCITING STOWE LIFESTYLE EXPERIENCE

Wildewood is a year-round residential experience set in nature and located within minutes of Stowe Mountain Resort. Pass through an iconic covered bridge and ascend Brook Road through a private entrance and past wooded trails to your new home in the mountains. Wildewood is a place where life is simpler, time moves slower and memories last longer. A place where value, architecture and nature offer you their best. Choose from stunning mountain modern homes that offer you 3 or 4 bedrooms and ample space for your family and personal activities.





INSPIRED BY NATURE

Nestled amidst nature with all modern amenities, the Wildewood homes echo the natural elements of their setting. Elegant, yet simple roofs rest on sturdy timber rafters that reach outward as the expansive glass in the cathedral-ceiling living room welcomes in nature and light to illuminate the warm and rich interior. The authentic materials and thoughtful siting are harmonious with the surroundings. These high quality homes, constructed by one of Vermont's most accomplished builders, are substantial structures that are one with nature.





MODERN LIVING

These meticulously crafted “mountain modern” dwellings all feature an open concept living space, accented by soaring ceilings, well-appointed finishes, and a dramatic steel clad gas fireplace. Floor plans include a main-floor master suite, guest bedrooms on the second floor, optional addition of a den/library, and a lower level that can be finished to accommodate a fourth bedroom and/or additional recreation/ media space. All residences will be smart-equipped and include options such as car-charging technology. A complete furnishing package may be added to complement the design and offer immediate usability.





LUXURY LIVING IN THE HEART OF NATURE

**JUST MINUTES TO STOWE MOUNTAIN
RESORT AND A SHORT DRIVE TO
HISTORIC STOWE VILLAGE**

THE
PERFECT
LOCATION

Wildewood is located in a highly desirable area in Stowe, just off the Mountain Road, with close proximity to world class skiing and cultural activities at Stowe Mountain Resort and only a 10 minute drive to historic Stowe Village. Enjoy direct access right from your door to the Catamount Cross Country Ski Trail with connectivity to the Trapp Family Ski Center. More than just a place, Wildewood offers an experience inspired by nature opening the door to what matters most... family, friends and healthy living.





EXPERIENCE WILDEWOOD

COMMUNITY AMENITIES

Wildewood offers year-round on site amenities! The centrally located warming hut, overlooking the cascading pond, offers a comfortable indoor and outdoor place for communal gathering. Relax around the outdoor firepit, while watching friends and family ice skate on the frozen pond. Enjoy a peaceful morning of fishing in the pond off of the dock. Wildewood residents also have access to nearby community tennis courts and an outdoor swimming pool.





EXPERIENCE WILDEWOOD

CONNECT WITH NATURE

From your Wildewood home, follow a path to the Catamount Trail, which weaves around the perimeter of Wildewood on its' travels through the length of the Vermont. Enjoy an afternoon of snowshoeing, cross-country skiing, mountain biking or a peaceful walk in the woods. Try fly fishing in a nearby brook or access the Stowe Recreation Path, from the entrance to Brook Road, for a bike ride or a jog.





EXPERIENCE WILDEWOOD

EXPLORE STOWE

Experience the adventure and the culture of Stowe Mountain Resort. From outdoors activities such as skiing, hiking and the thrill of zip lining to the culture of the Stowe Performing Arts Center. Experience Stowe culture and festivals: Balloon Fest, the British Invasion Car show, Stowe Farmers Market, Jazz Fest, Helen Day Art Center, Stowe Foliage Arts Festival, Stowe Winter Carnival and much much more!



CHOOSE THE ONE

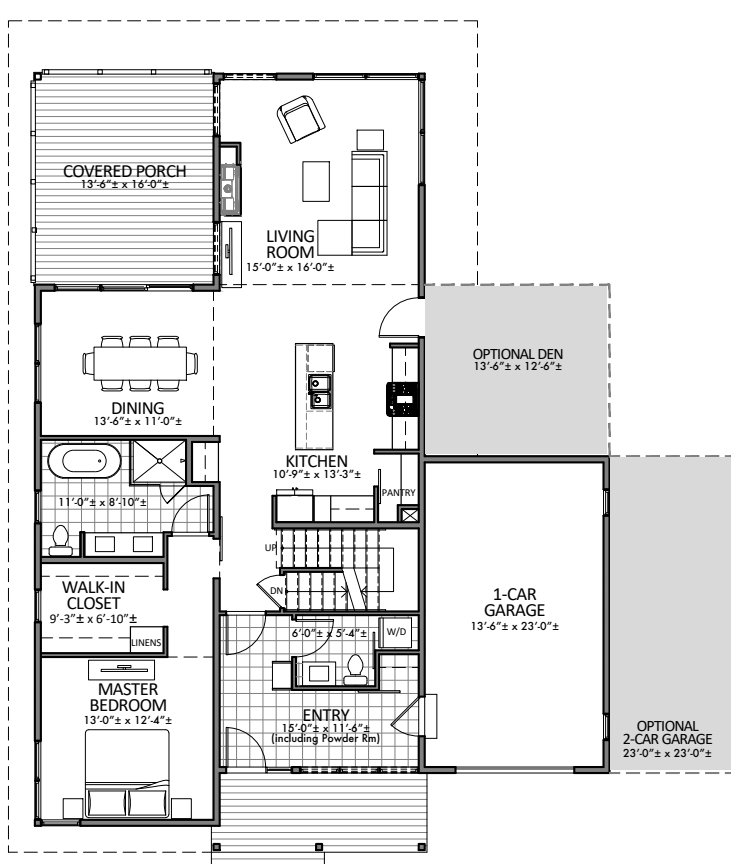


PINES

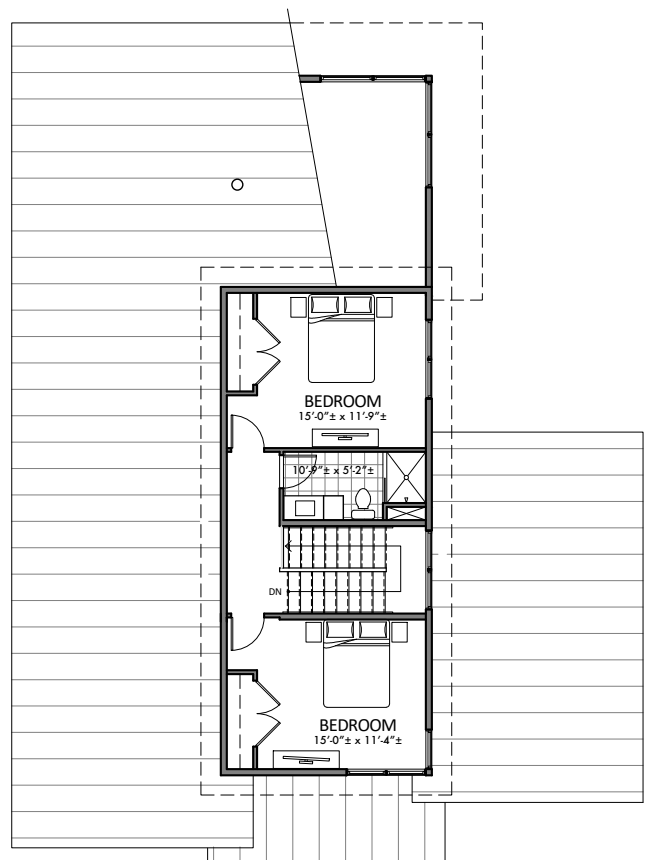
3-BEDROOM HOME
with ATTACHED GARAGE

The “Pines” 3-bedroom home features two floors of finished living space including attached 1-car garage, covered porch, and generous first floor master suite. Upgrade your build package with a 2-car garage, added den and a finished lower level for your family and recreational activities! Make it just right with our available custom upgrades.





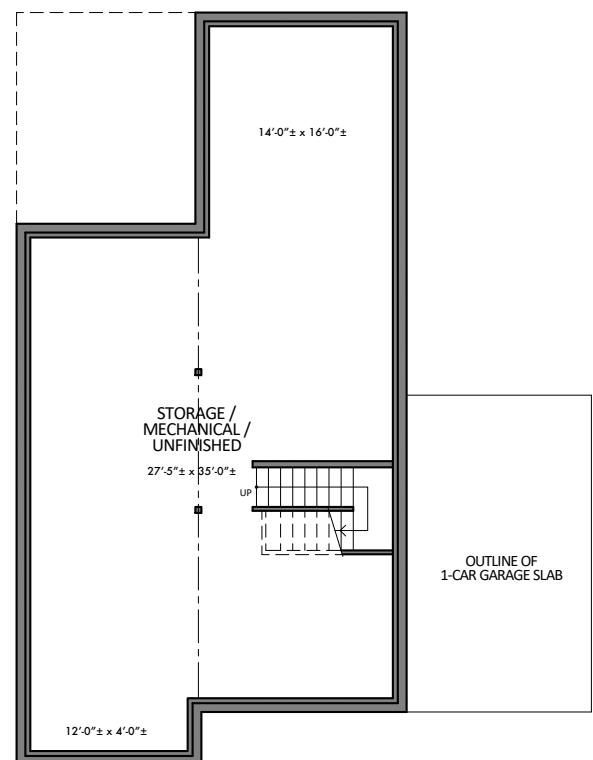
FIRST FLOOR PLAN
1,411 SF (EXCLUDING GARAGE)



SECOND FLOOR PLAN
592 SF

PINES FEATURES

- 3-Bedrooms on 2 Floors
- Covered Porch
- Attached Garage
- Full Basement with Finished Option
- Wood Floors
- Stainless Steel Energy Star Rated Appliances
- High Quality Wood Construction Cabinetry with Quartz Stone Tops and Waterfall Islands
- Stacked Washer / Dryer
- Efficient Electric Heating & Air Conditioning with Concealed Mini-Split System
- Designer Gas Fireplace
- Smart Home with High Speed Fiber Optic Connectivity
- Cathedral Ceilings with Exposed Wood Rafters
- Expansive Windows
- Generous First Floor Master Suite
- Direct Access to Catamount Cross Country Ski Trail
- On-Site Amenities Including:
 - Pond for Fishing and Ice Skating
 - Community Warming Hut
 - Hiking Trails
 - Communal Swimming Pool
 - On Site Tennis Courts



WALK-OUT FLOOR PLAN
1,405 SF UNFINISHED

PINES

3-BEDROOM HOME
with ATTACHED GARAGE



CHOOSE THE ONE

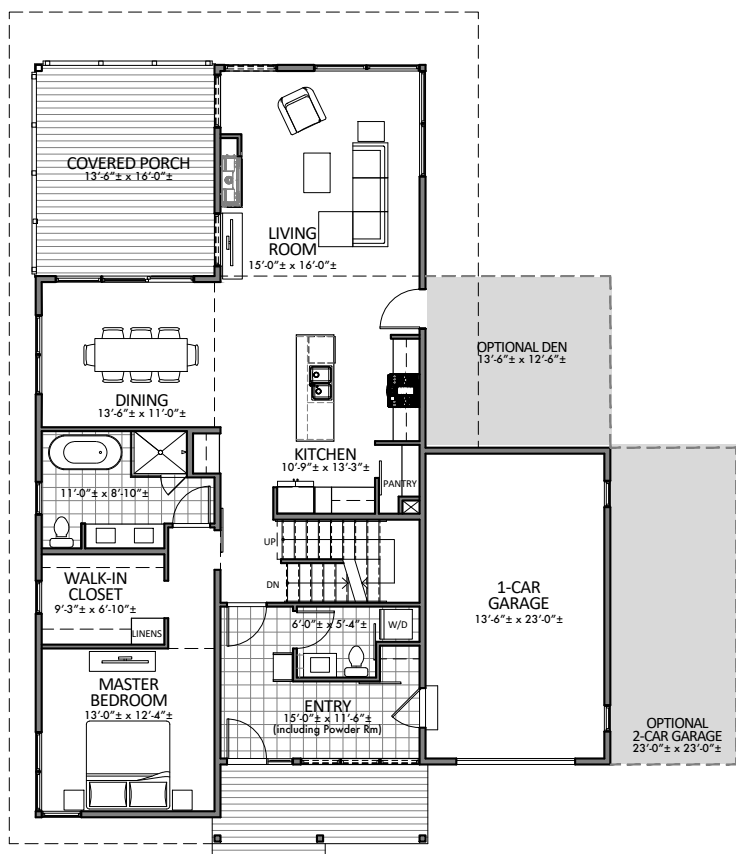


BIRCHES

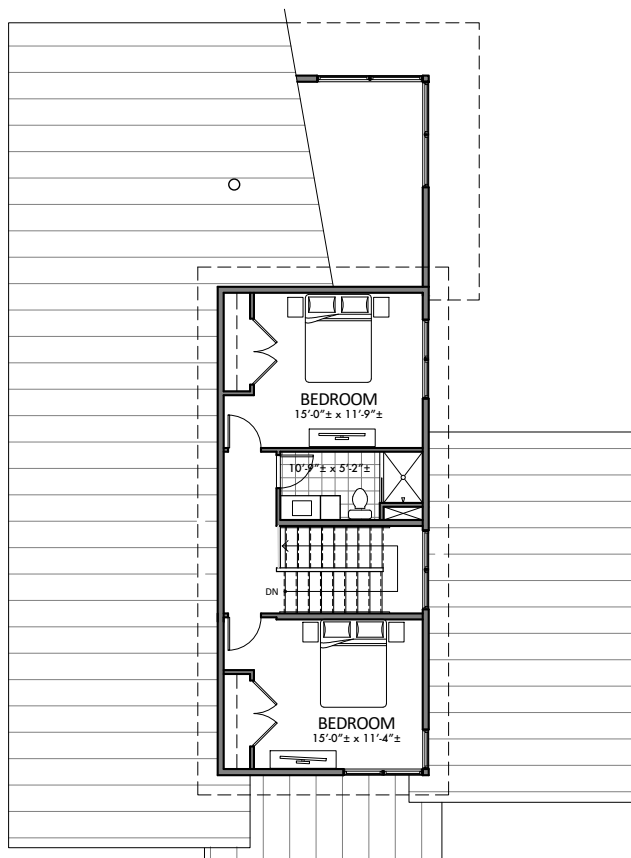
4-BEDROOM HOME
with ATTACHED GARAGE

The “Birches” 4-bedroom home features three floors of finished living space including attached 1-car garage, covered porch, generous first floor master suite and a bright walk-out with second master-bedroom suite and family room. Upgrade your build package with a 2-car garage, added den and a finished lower level for your family and recreational activities! Make it just right with our available custom upgrades.





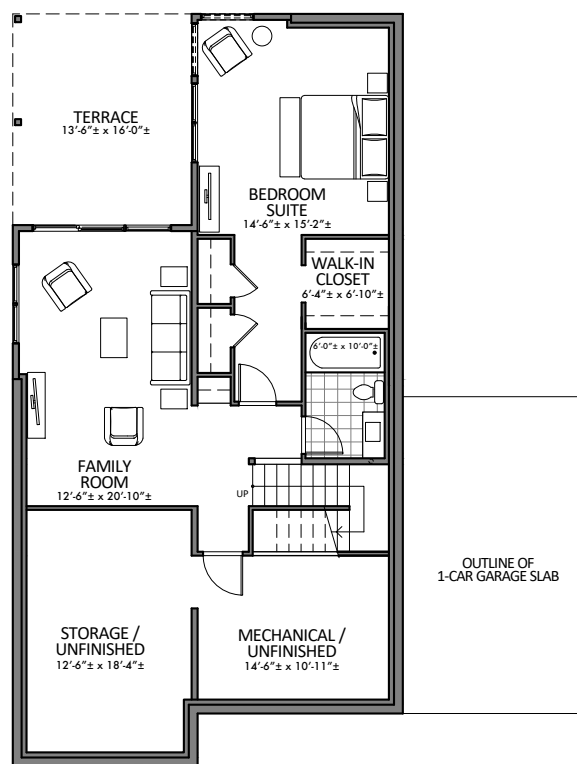
FIRST FLOOR PLAN
1,411 SF (EXCLUDING GARAGE)



SECOND FLOOR PLAN
592 SF

BIRCHES FEATURES

- 4-Bedrooms on 3 Floors
- Covered Porch
- Attached Garage
- Wood Floors
- Finished Walk-Out with Secondary Master Suite and Family Room
- Stainless Steel Energy Star Rated Appliances
- High Quality Wood Construction Cabinetry with Quartz Stone Tops and Waterfall Islands
- Stacked Washer / Dryer
- Efficient Electric Heating & Air Conditioning with Concealed Mini-Split System
- Designer Gas Fireplace
- Smart Home with High Speed Fiber Optic Connectivity
- Cathedral Ceilings with Exposed Wood Rafters
- Expansive Windows
- Generous First Floor Master Suite
- Direct Access to Catamount Cross Country Ski Trail
- On-Site Amenities Including:
 - Pond for Fishing and Ice Skating
 - Community Warming Hut
 - Hiking Trails
 - Communal Swimming Pool
 - On Site Tennis Courts



WALK-OUT FLOOR PLAN
910 SF FINISHED; 495 SF UNFINISHED

BIRCHES

4-BEDROOM HOME
with ATTACHED GARAGE



WILDEWOOD
STOWE . VERMONT



UPGRADE OPTIONS

MAKE IT YOUR OWN!

PERSONALIZE YOUR HOME WITH YOUR CHOICE OF EXCLUSIVE CUSTOM UPGRADES

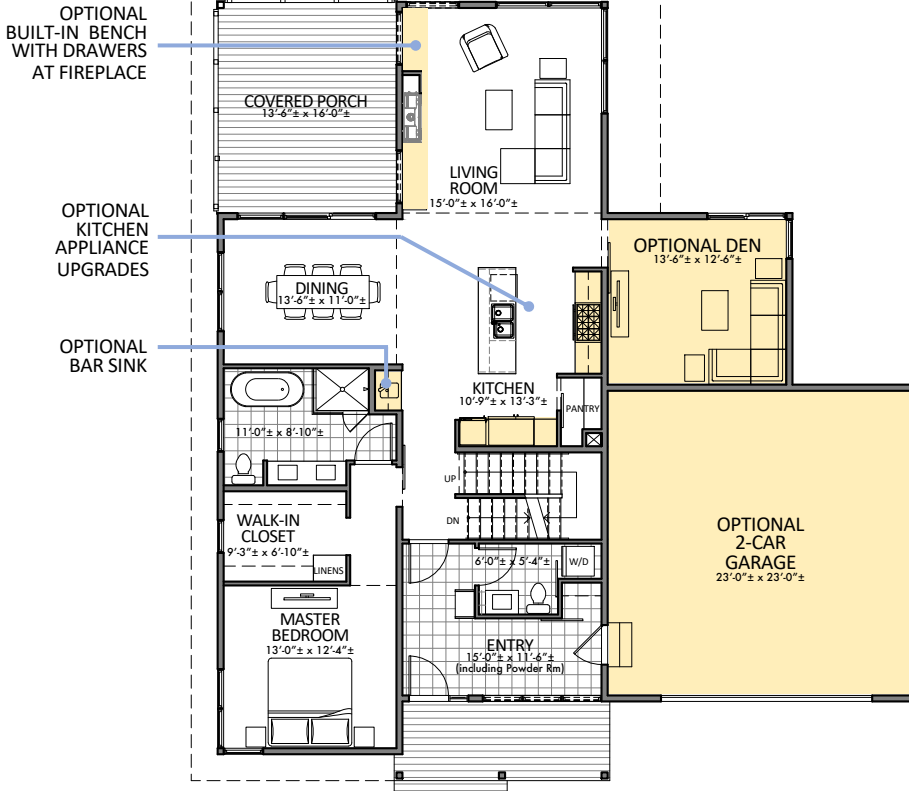
- 2-Car Garage
- Added Den
- Appliance Upgrades including Sub-Zero and Wolf Appliances and a Wine Chiller
- Tesla Car Charger
- Built-in with Bar Sink
- Built-in Bench with Drawers at Fireplace
- Architectural Pendant Light Fixture at Living Room Cathedral Ceiling
- Finished Basement with Window Light Wells (Where Walk-out is not Available)
- Outdoor Hot Tub and Terrace
- Furniture and Furnishings Packages



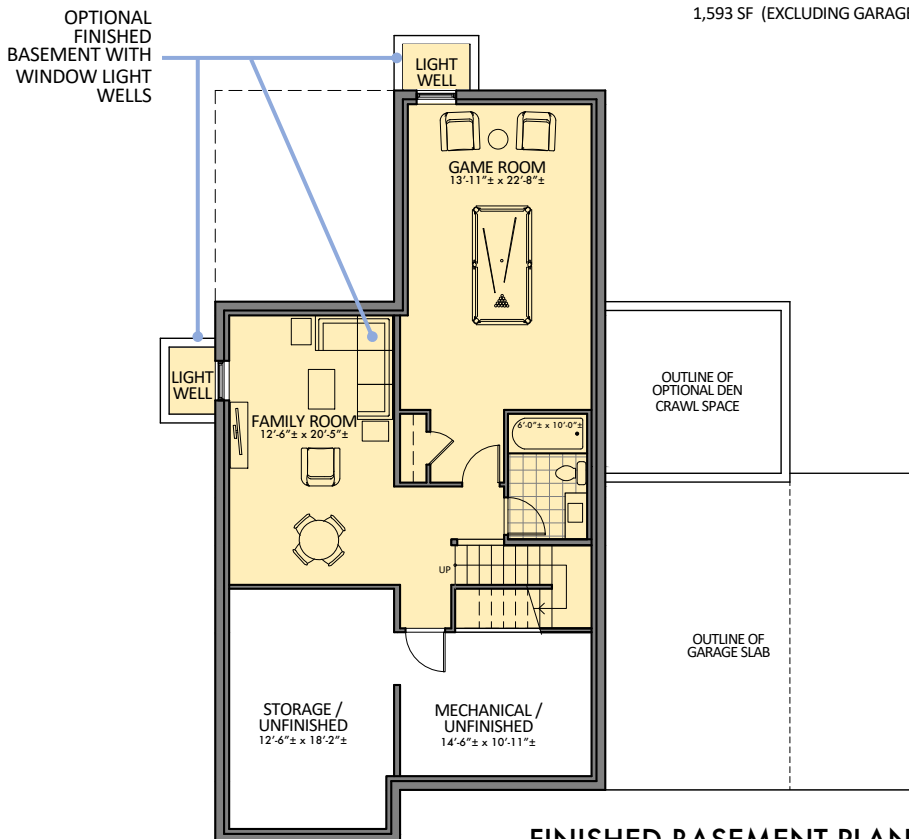
MAKE IT YOUR OWN!

BUILDING UPGRADES

Upgrade your build package with a 2-car garage, added den or finished lower level with light wells for homes without walk-outs! Or select from a myriad of premium interior upgrades including built-ins, specialty appliances and furnishings.



FIRST FLOOR PLAN
with OPTIONAL DEN, 2-CAR GARAGE,
BUILT-INS. and APPLIANCE UPGRADES
1,593 SF (EXCLUDING GARAGE)



FINISHED BASEMENT PLAN
(WHERE WALK-OUT IS NOT AVAILABLE)
910 SF FINISHED; 495 SF UNFINISHED

UPGRADES
BUILD PACKAGE



MEET THE TEAM



YOUKEL [architecture+development]

ALAIN YOUKEL | CO-DEVELOPER, ARCHITECT

Alain Youkel established his architectural practice in New York City. In 1993 he moved to Vermont with a strong focus on resort and residential architecture, where his unique and extensive experiences have resulted in a focused approach in creation of value through good design and sustainable development. An architect by profession, a storyteller by nature, and real-estate developer by choice - he innovates and implements creative solutions that endure the test of time. www.youkel.com



REDSTONE COMMERCIAL GROUP

LARRY WILLIAMS | CO-DEVELOPER

Larry Williams is a principal at Redstone, a full-service real estate firm located in downtown Burlington. As a principal in Redstone and the former owner of Vermont's Bolton Valley Resort, Larry has more than 40 years experience in property management, brokerage, acquisitions and development. He is actively involved in a variety of development projects and has a passion for "pushing the potential of place." www.redstonevt.com



PALL SPERA COMPANY

PALL SPERA & SHARON BATEMAN | REALTOR & MARKETING

Pall Spera Company knows Stowe Vermont real estate, with more than 45 years of experience in representing properties of distinction. They continue to be the top-producing Real Estate Agency in the region with 3 offices to serve you: In Stowe, on the Mountain Road and in the Village and in Morrisville, in the Northgate Plaza. www.pallspera.com

DONALD P. BLAKE JR. INC **CONSTRUCTION MANAGER**

Donald P Blake Jr, Inc. was originated in 1985 in Lamoille County and offers experienced and reliable contracting services. They have built their reputation by providing quality work on a variety of services including new construction of luxury homes in Stowe. Their organization is a skilled team providing the highest level of service, while continually improving the quality and value of their work. www.stowebuilder.com

DEVELOPMENT TEAM





LIVE IN
NATURE AT
THE
MOUNTAIN'S
DOOR

WELCOME TO WILDEWOOD

FOR RESERVATIONS AND INQUIRIES,
CONTACT:

PALL SPERA COMPANY

Pall Spera
(561) 762-8188
(802) 760-3111

Sharon A. Bateman
(802) 371-8777
(802) 760-3148

info@wildewoodstowe.com
www.wildewoodstowe.com

